

DREAM SERIES

FLAGSHIP SHEET FIBER LASER METAL CUTTING MACHINE

6kW/12kW/22kW/30kW/40kW



INTRODUCTION

Now the company has more than 2,000 employees from more than 20 countries around the world. Headquartered in Jinan, China, Bodor sets up 9 oversea subsidiaries, respectively in the US, India, Hungary, Turkey, Brazil, Mexico, Japan, South Korea, and Germany. The global footprint of Bodor has now covered over 180 countries and regions on six continents, building a complete sales channel and service network around the world to provide global customers with the best laser cutting application solutions.

51000m²

Production Base

7000+

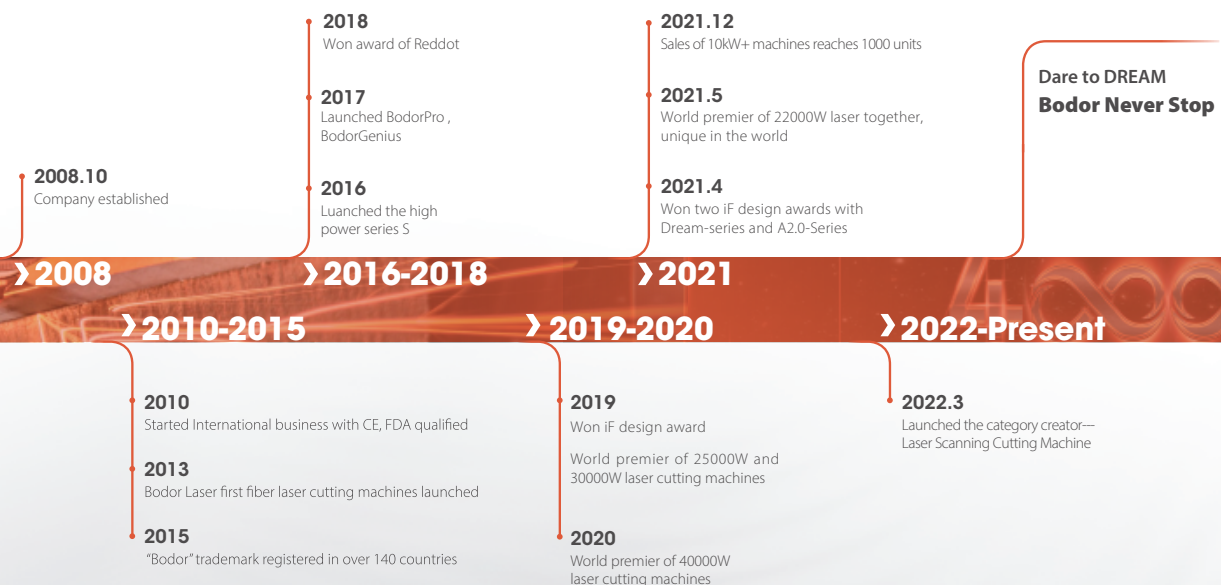
Delivery Capability

2000+

Global Employees



COMPANY HISTORY



GLOBAL NETWORK

180
countries covered

10+
global branches

4
Technical centers



ULTRA-HIGH POWER CAPABILITY

● **World premier**

World premier of 25000w, 30000w, 40000w and world unique 22000w laser cutting machine.

● **Sales record(Until 31th, Dec. 2021)**

Choice of 1000 companies worldwide on 10kW+ laser cutting machines, in 46 different countries and regions

● **No. 1**

Leading sales volume of 10kW+ laser cutting machines

R&D CAPABILITY



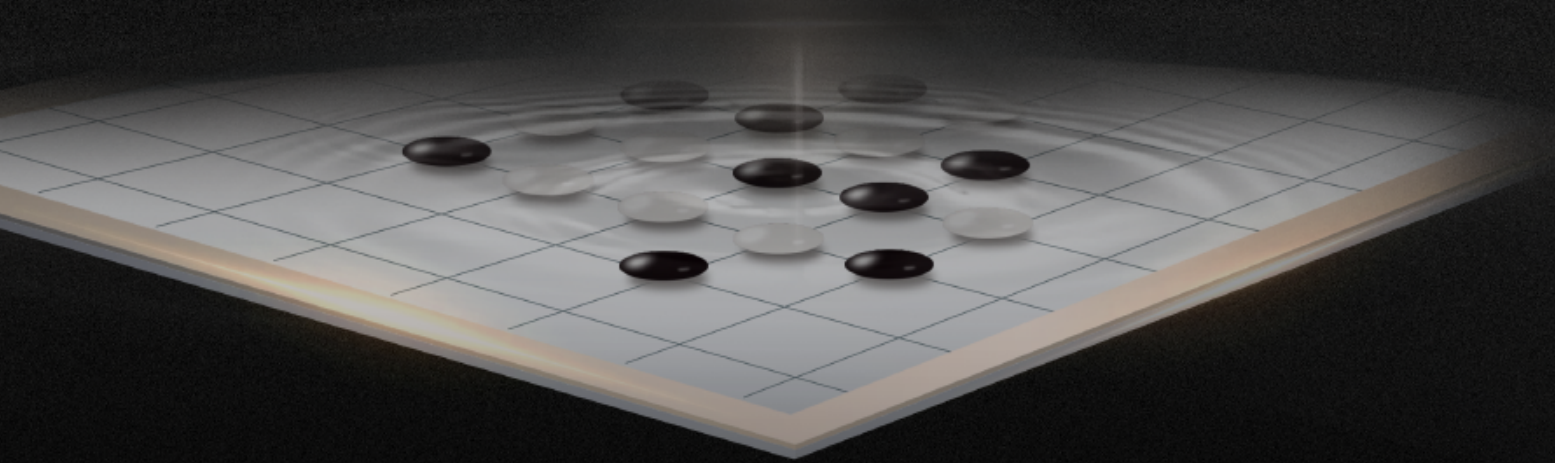
- Strong R&D team lead by the drafter of National Standards for CNC laser cutting machines
- Over 200 R&D Technicians, the R&D level is in line with international standards
- 10 subdivision platforms, including plate cutting, pipe cutting, application engineering, etc.
- 2 core R&D Centers in China and 4 overseas Technology Centers
- More than 200 patent certificates, 5 international awards, 22 industry awards

 **200+**
R&D Team

 **200+**
Patents

 **10**
R&D Platform

THE BLACK GO CHESS



Black Go chess — inspired by Go

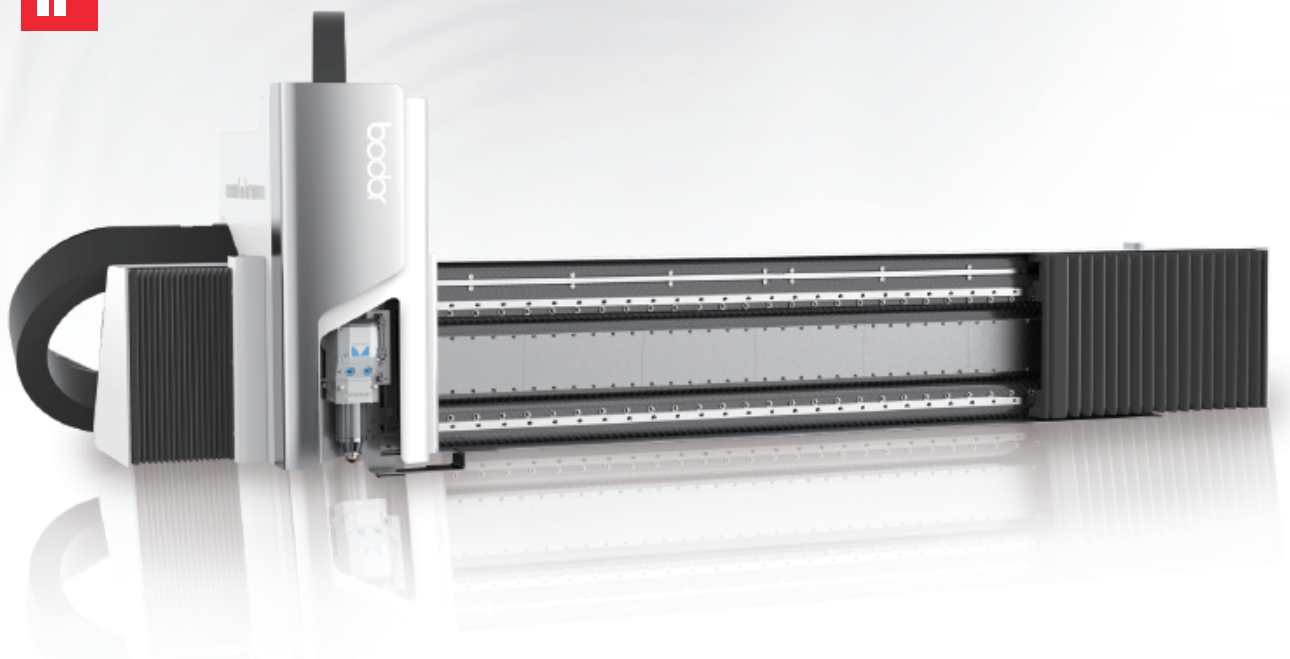
Circular — endless loop, endless exploration

Black — derived from obsidian crystal, steady and deep



MAGLEV LINEAR MOTOR

Base on the maglev linear motor technology, brings no mechanical friction, higher precision, more stable movement, simpler maintenance, faster response, shorter processing time, and higher efficiency.

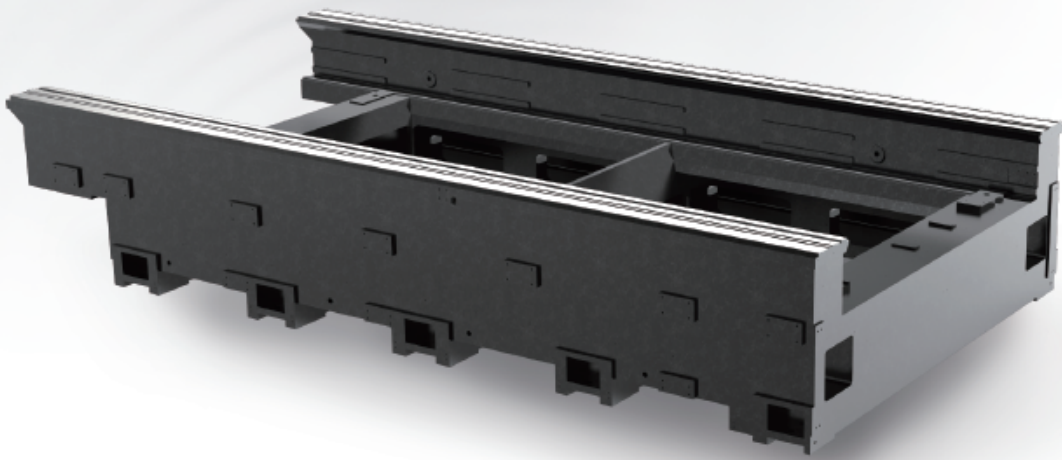


Advantages

- High Precision and Repeatability Precision
- Fast Dynamic Response
- Stable and Noiseless Running
- No Mechanical Contact and Friction
- Consistent Running Stroke Precision
- Simple Structure
- Low Maintenance Costs

MINERAL MACHINE BED

Using mineral marble, the original resistance to thermal radiation and its heavy body of excellent stability perform incomparable vibration absorption, vibration resistance, and a longer life cycle with no deformation.



Advantages

- More Stable and Reliable
- Higher Precision of Machined Workpiece
- Incomparable Vibration Absorption
- Lower Thermal Sensitivity
- Excellent in Shaping and Conformability
- Professional Structure Design for Smoke Exhaust

CARBON FIBER CROSSBEAM

The cross-section of the crossbeam made of carbon fiber by vacuum hot pressing adopts the typical mechanical stable structure of triangular prism, with ultra-low density, lighter weight, and stronger rigidity, so that the dynamic performance is perfect without deformation.



Advantages

- High Temperature Resistance, More Stability
- Fatigue Resistant Long Life
- Light Weight for Less Load
- Strength Never Bends the Crossbeam
- With High Modulus, No Creep Deformation
- Distortion Prevented by the Section Structure
- No Formation Stress

BODOR BLACK TECHNOLOGY

By configuring intelligent functions such as edge-seeking by light eyes and active anti-collision by laser head, the traditional laser processing method is subverted, reducing the operation threshold of laser cutting machines so that the use of them turns simpler, more efficient, and safer.

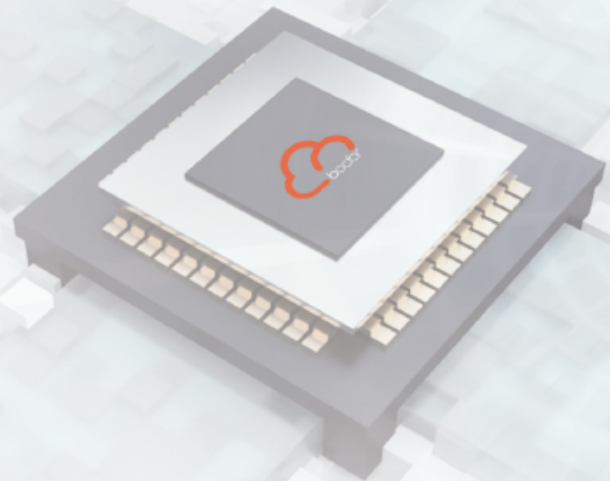


Advantages

- Automatic Edge-finding
- Active Anti-collision Function of Laser Head
- Fully Automated Process by One Click
- Cutting without Scrap Edge
- Intelligent Over-heat Adaptation
- Slag Cleaning at Starts
- Stable Cutting Pressure
- Intelligent Perforation

FULLY CLOSED-LOOP POSITION DETECTION

The fully closed-loop position detection is used to ensure that the actual motion position is consistent with the theoretical input value by negative feedback regulation and that the cutting accuracy and precision are to the greatest extent.



Advantages

- High Precision
- Closed-loop Control
- Anti-interference Capability
- Applicable to Wide Industries

ALL-IN-ONE CABINET (AVAILABLE FOR 6-15KW MACHINES)

With the electrical control, regulator, laser source, and water cooler integrated in one cabinet, the All-in-one Cabinet saves the installation time of the equipment and provides a better runtime environment for the auxiliary equipment by optimizing the space layout, allowing high-power machines to perform a continuous and stable work at long term.



Effective installation, easy operation

- The cabinet simplifies the installation for an immediate production with an instant operation which follows closely the landing and connection.
- Production becomes intelligent, quick and easy thanks to an easier start-up and a more convenient maintenance.

Layout optimization, less land occupation

- Space layout for equipment including the cutting machine and the auxiliary equipment is integrated more reasonably, which saves the site costs by occupying less land.

BODOR CLOUD



Advantages

- Daily equipment status management (processing data, report forms)
- Alarm and maintenance reminder
- Cloud transmission for processing programs
- Remote online service access with one key
- Real-time information of the latest cutting process

Technical Data

ITEM	Dream6	Dream4	Dream3
Working area"	6100mm*2500mm	4000mm*2000mm	3048mm*1524mm
Max. linkage speed"	200m/min	200m/min	200m/min
Max. acceleration"	4.0G	4.0G	4.0G
Table load bearing"	4835kg	2590kg	1500Kg
Machine overall dimensions"	16500*4200*2400mm	11000*3700*2400mm	9500*3200*2400mm
Overall weight"	31000kg	24500kg	20000kg
Z axis travel"	140mm	140mm	140mm
Positioning accuracy"	0.05mm	0.05mm	0.03mm
Repositioning accuracy"	0.03mm	0.03mm	0.02mm
Total power capacity/current with 40KW MAX source	279.4KVA/424.5A	279.4KVA/424.5A	279.4KVA/424.5A
Total power capacity/current with 30KW MAX source	219.4KVA/333.3A	219.4KVA/333.3A	219.4KVA/333.3A
Total power capacity/current with 22KW source	156.8KVA/239.6A	156.8KVA/239.6A	156.8KVA/239.6A
Total power capacity/current with 12KW source	109KVA/166.9A	109KVA/166.9A	109KVA/166.9A
Total power capacity/current with 6KW source	75.1VA/114.1A	75.1VA/114.1A	75.1VA/114.1A

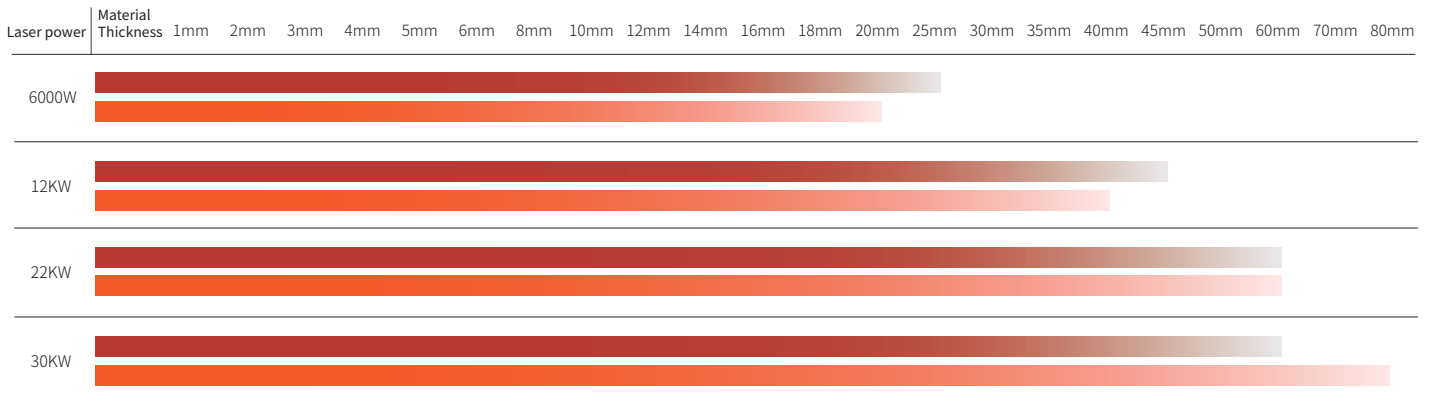
Configuration And Components



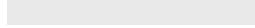
laser head	BodorGenius	
Laser source	Bodor Power	
Mineral casting bed	●	
Carbon fiber gantry	●	
X-axis· Y-axis closed-loop position detection	●	
X-axis· Y-axis magnetically levitated motor	●	
Protective Enclosure	●	
Hydraulic exchange platform	Double hydraulic cylinder vertical elevator	Single hydraulic cylinder cable stayed
Enhanced-partition Dust Removal	●	
Control system	BodorThinker	
Display size	21.5 inches	
Door-open Protection	●	
Intelligent alarm	●	
Dust removal	Smoke purifier	
Voltage regulator	●	
Water Chiller	●	

Cutting Parameters

		1000W	1500W	2000W	3000W	6000W	12kW	15kW	22kW	30kW
	Thickness	speed m/min	speed m/min	speed m/min	speed m/min	speed m/min	speed m/min	speed m/min	speed m/min	speed m/min
"Carbon steel (Q235A) O2"	1	8.0-10	8.0-10	8.0-10	8.0-10	8-10	9-11	9-11	9-11	9-11
	2	4.5-5.5	4.5-5.5	4.0-6.0	5.5-7.5	5-7.5	5-7.5	5-7.5	5-7.5	5-7.5
	3	2.4-3.0	2.5-3.4	3.0-4.0	3.0-4.0	3.5-5	3.5-5.5	3.5-5.5	3.5-5.5	3.5-5.5
	4	1.8-2.2	2.1-2.4	2.8-3.3	2.8-3.5	3.0-4.5	3.5-5	3.5-5	3.5-5	3.5-5
	5	1.6-1.8	2.0-2.5	2.2-2.8	2.6-3.2	3.0-4.2	3.3-4.8	3.3-4.8	3.3-4.8	3.3-4.8
	6	1.2-1.3	1.6-1.8	1.8-2.3	2.5-2.6	2.5-3.5	3.0-4.2	3.0-4.2	3.0-4.2	3.0-4.5
	8	0.6-0.8	1.0-1.2	1.2-1.7	1.6-1.8	2.2-3.2	2.5-3.8	2.5-3.8	2.5-3.9	2.5-3.9
	10		0.7-0.9	1.0-1.2	1.4-1.6	1.8-2.5	2.2-3.6	2.2-3.6	2.0-3.8	2.2-3.8
	12		0.7-0.8	0.8-1.0	1.0-1.4	1.2-2.1	1.2-3.5	1.2-3.6	1.6-3.8	1.6-3.8
	14		0.5-0.7	0.6-0.85	0.8-0.9	1.2-1.8	1.7-3.3	1.5-3.5	1.5-3.8	1.6-3.8
	16			0.6-0.75	0.7-0.8	0.8-1.5	1.2-3.1	1.2-3.5	1.4-3.7	1.5-3.7
	18				0.6-0.7	0.6-1.2	1.0-2.7	1.2-3.0	1.4-3.6	1.4-3.6
	20				0.5-0.6	0.5-0.8	0.6-2.4	1.2-2.7	1.5-3.5	1.5-3.5
	25					0.3-0.55	0.5-1.6	0.8-1.8	1.0-3.0	1.0-3.1
	30						0.3-1.0	0.6-1.4	0.8-2.2	1.2-2.6
	35						0.3-0.7	0.4-0.7	0.6-1.0	0.9-2.2
	40						0.2-0.4	0.3-0.5	0.5-1.1	0.8-1.7
45						0.2-0.3	0.2-0.5	0.3-0.6	0.5-0.8	
50								0.2-0.6	0.4-0.6	
60								0.2-0.5	0.2-0.4	
"Stainless steel (201) N2"	1	18-20	20-30	24-50	30-55	42-52	70-85	72-100	72-100	72-100
	2	5.0-7.0	8.0-16	9.0-17	12-30	20-33	40-66	45-70	50-75	50-75
	3	2.2-4.0	3.0-5.5	4.0-7.0	6.0-10.0	15-22	35-45	38-50	38-55	38-55
	4	1.2-2.3	1.5-3.2	3.2-4.0	4.0-6.0	10-15	20-32	25-35	25-33	30-35
	5		0.7-1.5	2.0-2.7	3.0-5.0	7.0-12	18-25	20-30	22-30	25-32
	6		0.7-1.3	1.2-1.8	2.0-3.2	4.8-9.0	12-15	15.0-25.0	17-25	18-26
	8			0.7-1.2	1.0-1.8	3.0-4.0	8-12	8.0-12.0	12-18	15-20
	10				0.5-0.85	1.6-2.5	6.0-8.0	6.0-10.0	8.0-12.0	12-15
	12				0.4-0.5	0.8-1.5	4.0-5.5	4.0-6.0	6.0-9	8-12
	14					0.6-1.2	3.0-5.0	3.5-5.5	5.0-7.0	6-10.5
	16					0.5-1.0	2.2-2.8	2.5-3.0	3.0-5.0	5-9
	18					0.4-0.8	1.2-2.0	1.2-2.2	1.8-4.2	3-6.5
	20					0.3-0.6	1.0-1.6	1.3-1.8	1.5-3.3	2-4.7
	25						0.5-0.8	0.6-1.2	1.5-2.0	1.8-2.5
	30						0.3-0.6	0.5-1.0	1.0-1.5	1.5-1.8
	35						0.3-0.5	0.4-0.8	0.4-0.8	1.0-1.5
	40						0.3-0.5	0.3-0.6	0.3-0.6	0.6-1.3
45							0.2-0.5	0.2-0.6	0.8-1.0	
50							0.1-0.5	0.2-0.5	0.25-0.5	
60							0.1-0.2	0.1-0.3	0.2-0.3	
70									0.17-0.3	
80									0.15-0.3	
"Aluminum N2"	1	8-10	10-15	15-25	25-30	42-55	60-85	70-100	70-100	70-100
	2	2.8-3.6	5.0-7.0	7-10	13-20	20-40	38-50	40-55	40-70	40-70
	3	0.7-1.1	2.0-2.6	4.0-8.0	6.5-7.5	15-25	30-40	35-45	35-60	35-60
	4		1.0-1.4	2.5-3.0	3.5-5.0	9.5-12	20-30	30-40	30-43	30-45
	5		0.5-0.7	1.2-2.5	2.5-3.5	5.0-8.0	15-25	20-30	22-35	22-34.0
	6			0.6-0.9	1.5-2.5	3.8-5.0	10-15	15-24	18-28	18-32
	8				0.7-1.0	2.0-2.5	7.0-12	8.0-12.0	12-20	12-23
	10					1.0-1.5	4.5-8.0	5.0-9.0	7.0-12.0	7.0-16
	12					0.8-1.3	4.0-5.0	4.0-6.0	4.5-6.5	4.5-12
	14					0.9-1.2	1.8-2.7	2.5-3.2	3.0-4.0	3.0-8.0
	16					0.5-0.8	1.5-2.5	2.0-3.0	2.5-3.5	2.5-6
	18					0.5-0.7	1.0-1.8	1.5-1.9	1.8-2.2	1.8-2.2
	20					0.5-0.7	0.9-1.5	1.3-1.8	1.5-2.0	1.5-2.0
25						0.6-0.9	0.6-1.2	0.8-1.5	0.8-1.5	
30						0.3-0.8	0.5-1.0	0.6-1.2	0.6-1.2	
35						0.3-0.6	0.3-0.8	0.4-0.9	0.4-0.9	
40						0.3-0.4	0.3-0.5	0.3-0.5	0.4-0.6	
"Brass N2"	1	6.0-10	8.0-13	10-16	20-30	35-45	55-65	60-70	65-75	65-75
	2	2.8-3.2	3.0-4.5	5.0-6.0	6.0-10	20-30	38-42	40-45	40-60	40-60
	3		1.5-2.5	2.5-7.0	3.0-8.0	12-18	18-30	20-35	25-40	25-40
	4		0.8-1.2	1.8-3.0	2.5-4.0	8.0-12.0	15-20	18-30	20-35	20-35
	5				1.5-2.0	6.0-8.0	10-15	15-20	20-28	20-30
	6				1.0-1.8	3.0-6.5	6.0-8.0	8-15	12-20	12-22
	8					1.6-2.2	5.0-7.0	8.0-10.0	9.0-12	9.0-15
	10					0.8-1.2	4.5-6.0	5.0-6.5	6.0-10	6.0-13
	12					0.3-0.5	2.4-4.0	2.8-4.2	3.0-4.5	5.0-10
	14						0.8-1.5	1.0-1.8	1.8-4.0	3.0-7.0
	16						0.6-1.2	0.8-1.5	1.5-3.0	1.5-3.0
	18						0.4-0.6	0.6-0.8	1.0-2.5	1.2-2.5
	20							0.4-0.6	0.4-2.0	1.2-2.0
25								0.3-0.5	0.5-0.8	
30									0.4-0.6	

Cutting Capacity

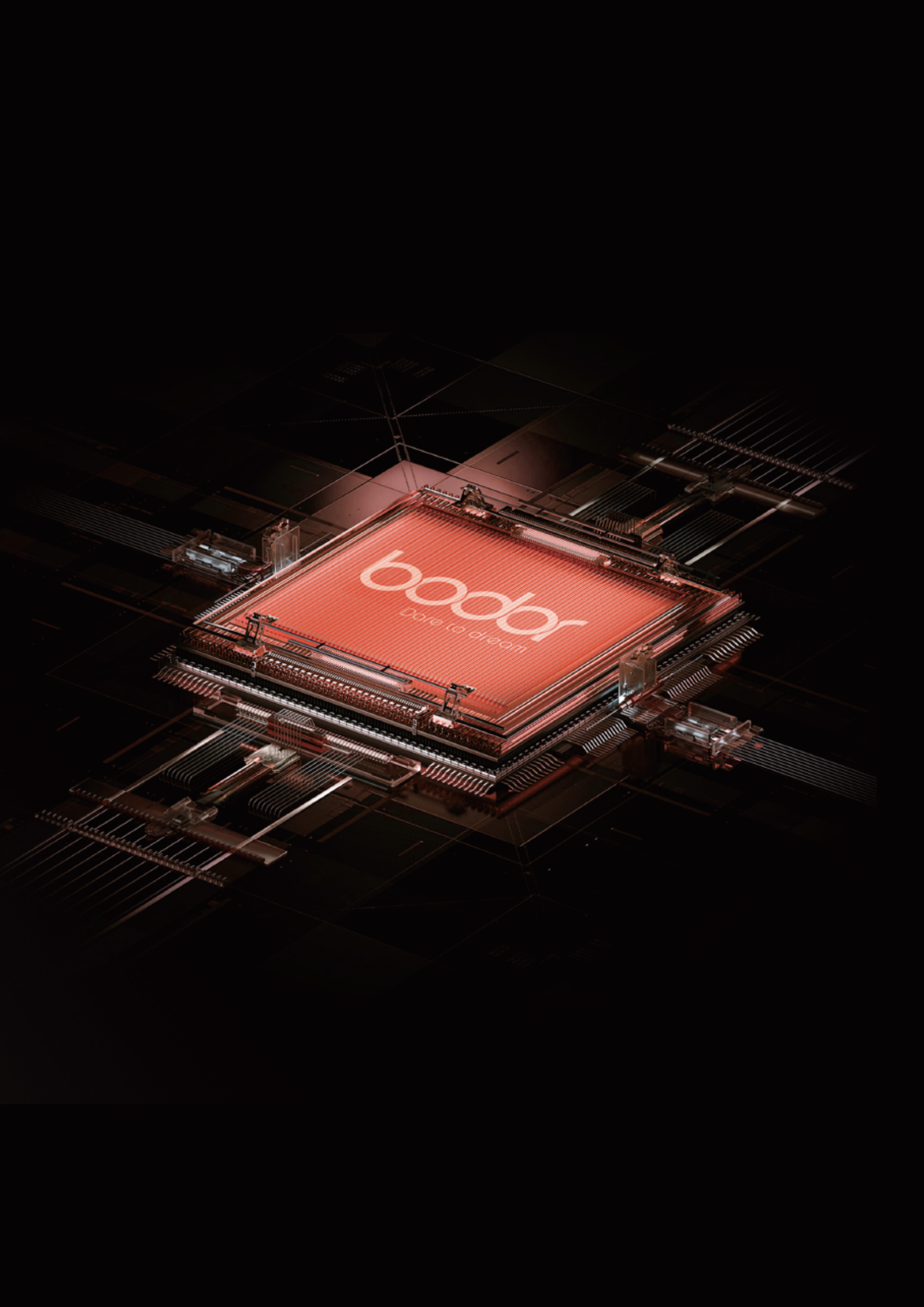


	Carbon steel
	Stainless steel
	Max cutting thickness (long-term using isn't recommended)

Above data is only for reference

Cutting Samples





boddor
Care to dream